

Motorized Roller Blind / Roman Blind

ATF35



- Exceptionally compact motorized roller blind.
- High quality and long lasting.
- Can be used for Roman and Roller Blind.

ATF35's Unique Features

This compact design motorized roller blind offers a variety of uses: from commercial to home.

ATF 35 tubular motor realizes quiet operation.

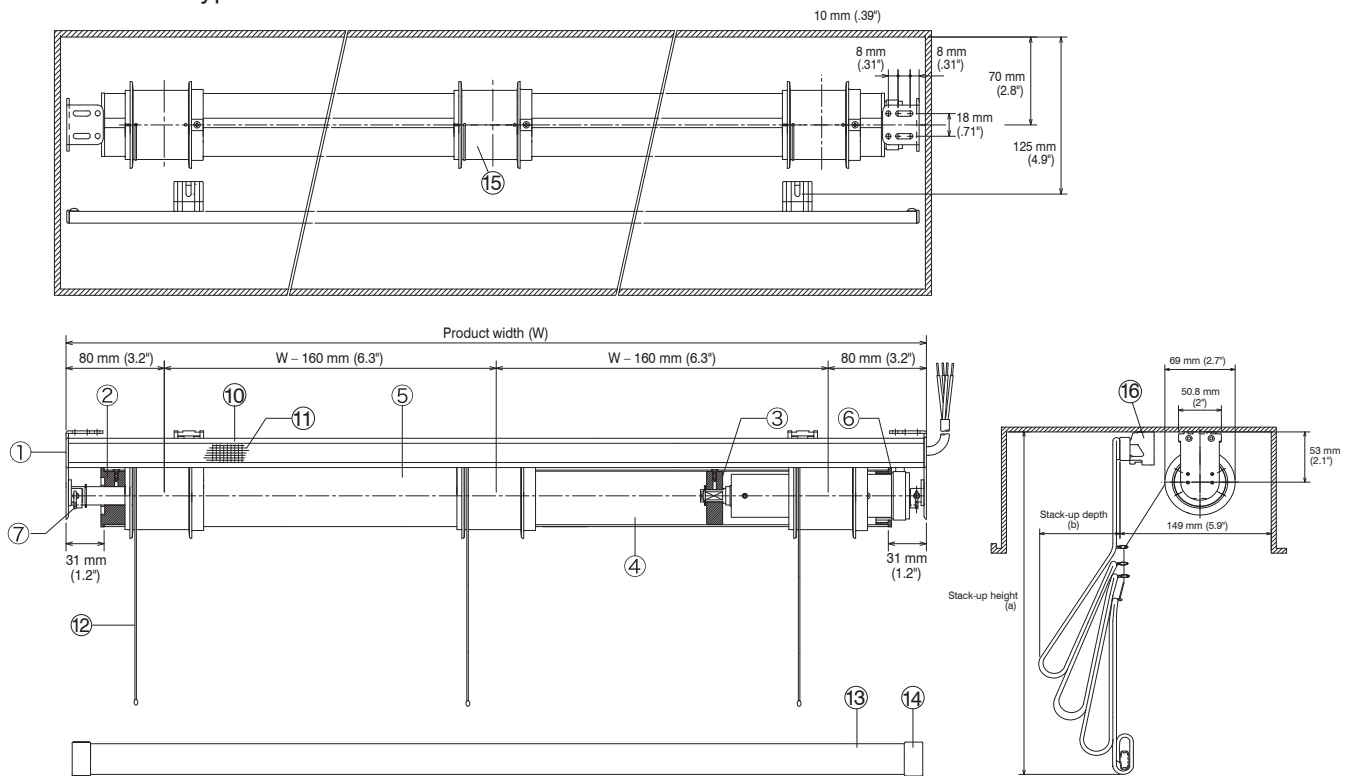
Roman Blind Pulley and Velcro Tracks Available.

Pelmet space Roller 4", Pelmet space Roman 5"

Max. width 3 mtr., max. height 4 mtr., max. weight 8 kg.

Structure Drawing - Roman Blind

Head Rail Type



Components and Materials

Side Bracket Type / Head rail Type

No.	Components	Material
①	ATF35 End Side Bracket	Stainless steel
②	ATF35 Pipe End	Polyacetal resin
③	ATF35 Drive	Polyacetal resin
④	ATF35 Tubular Motor	—
⑤	ATF35 Roller Pipe ø 50	Aluminum
⑥	ATF35 Limit Crown	Polyacetal resin
⑦	Split Pin	Steel
⑧	Weight Bar	Aluminum

No.	Components	Material
⑨	MT03 Weight Bar Cap	Polyethylene resin
⑩	Freel Head Rail	Aluminum
⑪	RS Slide - in Velcro	Polypropylene
⑫	Lift Cord ø 1.2	Polyester Fiber
⑬	RS Weight Bar 25	Steel
⑭	RS Weight Bar Cap 25	Polyethylene resin
⑮	ATF35 - RS Recoiling Pulley	Polyacetal resin
⑯	Freel Bracket	Polyacetal resin

Motor Specifications

Power Source Voltage	V	AC220-230
Frequency	Hz	50/60
Current	A	0.53
Power Consumption	W	121

Rated Torque	Nm	3
Rated RPM	rpm	23.5/27
Rated Running Time	min	4
Ambient Temperature	°C	-10-40

Allowable Size

Width	600-2000 mm (24-79")
Height	500-4500 mm (20-177")
Max Surface area	9 m ² (11 yd ²)

Product Weight

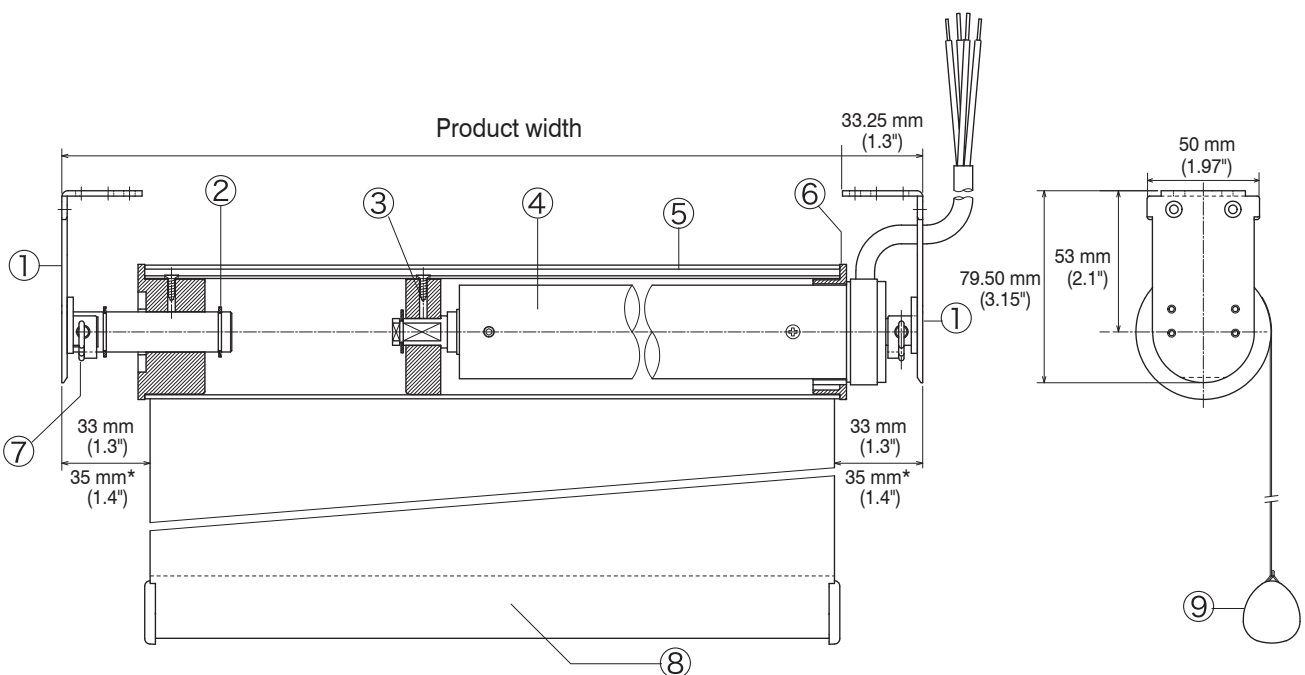
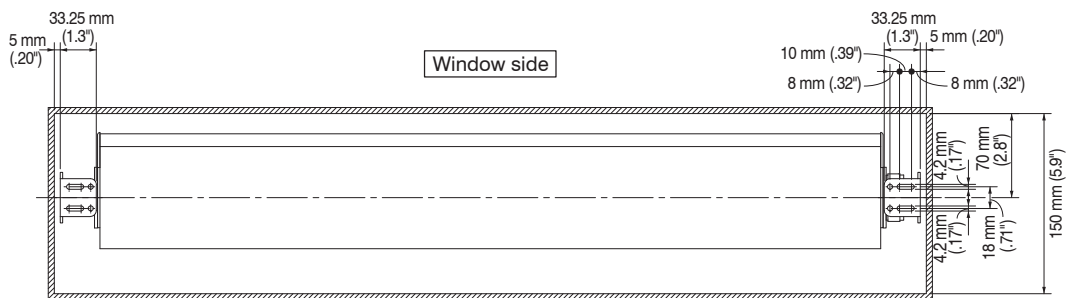
4.2 kg (9.3 lb)
(width: 2000 mm/79" without screen)

*On Side Bracket Type.

*Allowable size is different by the screen fabric. Please refer to "Typical Roll-up Diameter" and Rated Torque.

Structure Drawing - Roller Blind

Side Bracket Type

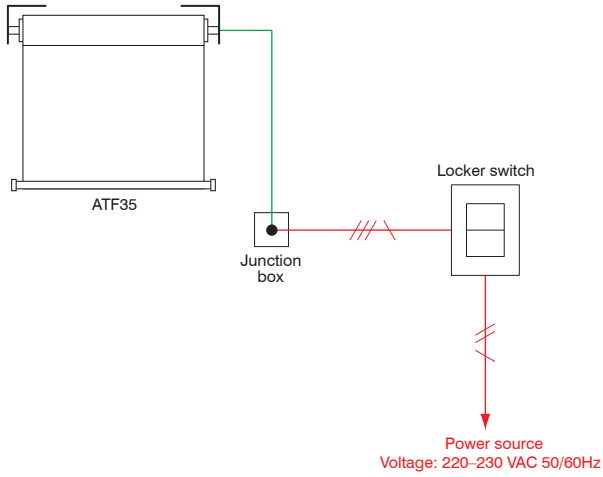


*Dimensions for the ratio of the width and height is 1 : 3 or more.

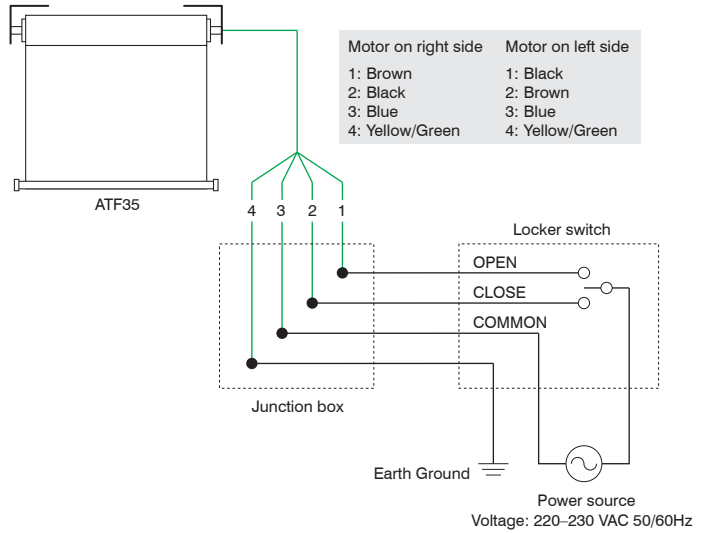
Basic Wiring and Connecting Diagram

Single Operation

Basic Wiring Diagram



Basic Connecting Diagram



FM Remote Operation

